



- 
- [SAMRU Calendar](#)
- 
- [Students' Association News](#)
- [What's Happening On Campus?](#)
- 
- [Contests](#)
- 
- [Movies that Matter](#)
- 
- [Students need to vote!](#)
- 

## EVENTS & NEWS

[Events & News](#) » [What's Happening On Campus?](#)

### What's Happening On Campus?



Welcome from your Students' Association! | April 2011

In this issue: (Click to skip)

- [Who won the recent SAMRU elections?](#)
- [Join the General Faculties Council](#)
- [Find study space on campus](#)
- [Free food for stressed-out students](#)
- [Want to be a knight, queen, or a bishop?](#)
- [Fefe comes to Wyckham](#)
- [Join the drum circle!](#)
- [Last Class Bash](#)
- [E-Award winners](#)
- [New grads: Stay in touch!](#)
- [Opt-out cheques now available](#)
- [Make your summer work matter!](#)
- [Consign your books and make \\$\\$\\$](#)
- [Who won the SAMMIES?](#)
- [Stay connected with your SAMRU](#)
- [SAMRU Event Highlights](#)
- [SAMRU in the News](#)
- [Archive of past issues](#)

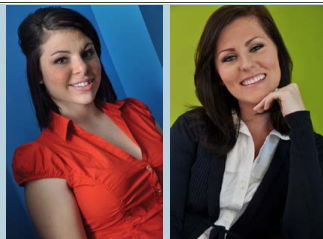
#### Elections - who won?




If you haven't heard, in February you elected your new Executive Committee and Students' Council for SAMRU. The candidates will be stepping into their positions in May, with a one-week cross over between the outgoing and incoming positions. Congratulations to all of the candidates who ran exciting and well-planned campaigns!

Your 2011-2012 Executive Committee will be:

- President – Meghan Melnyk
- VP Academic – Jennifer Langille



- VP External – Michelle Dennis
- VP Student Life – Kaylene McTavish

Your 2011-2012 Students' Council representatives will be:

- Arts Faculty Representative – Serena Navarro
- Business & Entrepreneurial Studies Faculty Representative – Danish Haider
- Communications Studies Faculty Representative – Lexie Courtney
- Health & Community Studies Faculty Representative – Gary Verma
- Science & Technology Faculty Representative – Arielle Muriel
- Women Students' Representative – Diane Nguyen

The remaining Students' Council seats including the four commissioner positions will be filled by appointment in September 2011.

[Learn more about Students' Council >>](#)

## The SAMRU wants YOU for the GFC!

The General Faculties Council (GFC) is the highest academic decision-making board on campus and is at the same institutional level as the MRU Board of Governors. GFC makes decisions on issues such as which programs Mount Royal should offer, what their academic polices should contain, and other student and faculty related concerns.

Applications are now being accepted for the 2011-2012 academic year's councillors. If you want to add great experience to your resume and have the opportunity to influence decision-making at MRU, consider applying for the GFC!



For more information about joining the GFC, contact Anna Piltingsrud, VP Academic [vpacademic@samru.ca](mailto:vpacademic@samru.ca) or visit: <http://www.samru.ca/governance/generalFacultiesCouncil.htm>

You can also find out more information at our information booth:

Main Street  
March 30-April 13  
10-3pm

[Learn more about the GFC >>](#)

## Extended Campus Hours Access During Exam Period: Student learning spaces, Mount Royal University

- FROM STUDENT SPACES COMMITTEE, MOUNT ROYAL UNIVERSITY AND YOUR VP STUDENT LIFE, **EILY SWEENEY**

Access to university facilities and finding space to study or meet are of critical importance to Mount Royal students – especially at final exam time. Please be aware of the following extended campus hours during the exam period.

EXAM PERIOD: APRIL 15 – 29, 2011

24 Hour Access During Exams

- Y219
- Recreation Concourse
- Wyckham House



Easter Holidays - Friday April 22, Sunday April 24 & Monday April 25

- EA, EB and EC closed, main building open until 11pm
- Y219 and Recreation Concourse open 24 hours
- Wyckham House will be open 6:00 am -10:00 pm
- Closed Friday April 22

Library

- Open until 10 p.m. daily April 15 - April 28
- Open 10:00 a.m. - 10:00 p.m. Monday April 25

#### STUDENT SPACES COMMITTEE

Purpose: With spaces across campus facing increasing pressure, this committee is working to meet the critical and ongoing need of Mount Royal students to find informal space outside the classroom to meet, read or study.

##### 1. Phase I

To meet the immediate need for student space, we have identified all current informal learning spaces across the Mount Royal campus that students may not know about. Spaces have been categorized onto three types:

- Q — Quiet
- C — Cubicle
- M — Multipurpose

All current informal student spaces and their categories are listed on the website [mtroyal.ca/studentspaces](http://mtroyal.ca/studentspaces)

##### 2. Phase II

To meet ongoing space needs for students, to identify areas on campus not currently used or areas that are currently underutilized as informal student spaces and put forward recommendations to transition these into useable student learning spaces.

##### 3. Phase III

To meet future space needs for students, campus expansion plans (Library, Learning Centre) will open up new opportunities for space that will be identified and utilized at that time.

## Stressed out about exams? Get some relief!

The end of a semester is a stressful period for students – you're juggling final projects, studying for exams, those dreaded group presentations, and in April, you're probably also thinking about finding a summer job that can sustain you through your next semesters. Some of you will be taking spring classes and others might get the opportunity to travel, but it's definitely a stressful time of year!

Your SAMRU wants to help you out a bit over exams, to help relieve just a bit of the stress you're carrying.

One great way to relieve stress is to eat properly. So, put down that bag of



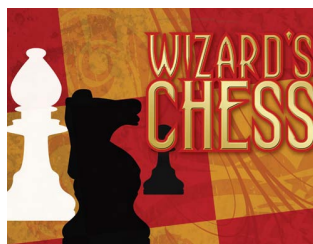
chips and 2L bottle of pop, you'll find your energy level will last longer and you'll have better concentration if you've had something healthy to eat!

We'll be where you're studying, check out the locations below where you can get a fresh, free, healthy snack or lunch from 11:30-1:30 while supplies last:

April 18th - B Wing/Exam Gym  
April 19th - EA Building/ Exam Gym  
April 20th - EB Building/ Exam Gym  
April 21st - T Wing/ Exam Gym

Exam Relief is sponsored by your Student's Association of MRU, in partnership with Encana Wellness & MRU's Multi-Faith Chaplaincy.

[Check out where we'll be >>](#)



## Live wizard's chess match April 5th

*We are pleased to inform you that you have been invited to participate in the Triwizard Tournament of Chess.*

*The match is to commence at 1 o'clock on the 5th day of April in the year 2011 in Wyckham House.*

*If you intend to participate in the chess tournament, we request your owl in advance of the match to be delivered to:*

**Tiffany Riddell**

*(Order of Merlin, First Class, Grand Sorc. Chf. Warlock, Supreme Mugwump, International Confed. of Wizards, Coordinator of the Cultural Mosaic Centre)*

at:

403-440-5185

Or

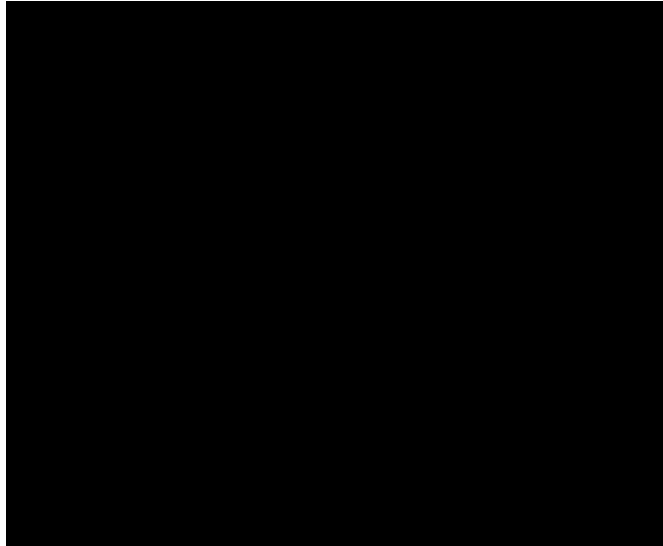
[cmc@samru.ca](mailto:cmc@samru.ca)

*Please find below a list of additional details required for your successful participation in this event.*

### Volunteers

- Help set up
- Help take down
- Represent human chess pieces in a game of Wizard's Chess
- Learn about chess, it's history, and cultural relevance internationally
- Students may also bring a (stuffed) owl OR a cat OR a toad

*Students are reminded that first years are not allowed their own broomsticks.*



This event is brought to you by the Chess Club and the Cultural Mosaic Centre.

[Learn more about the Chess Club >>](#)

[Learn more about the Cultural Mosaic Centre >>](#)

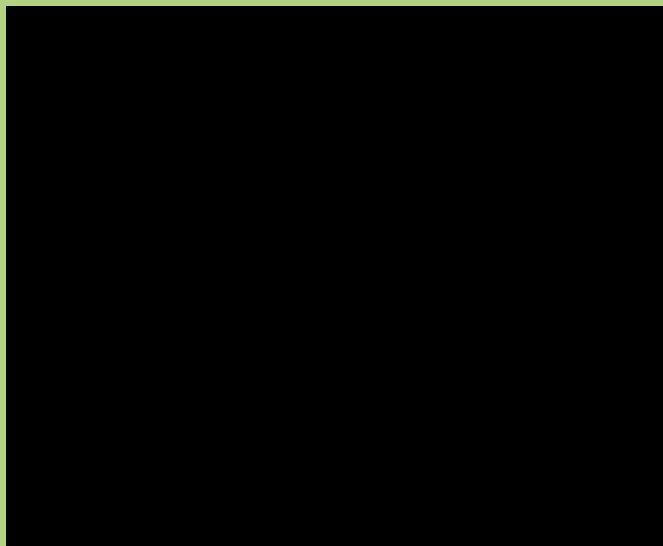
## Fefe Dobson rocks Wyckham House April 7th

On Thursday April 7th, get your fill of Canadian musical talent as Juno Award nominated singer-songwriter Fefe Dobson rocks out in Wyckham House along with guests These Kids Wear Crowns and For The Weekend.

The show starts at 8pm, and is presented by your SAMRU and AMP 90.30. Tickets are \$17.50 in advance, and you can get yours at the Liberty Lounge right here in Wyckham House or online through

<http://primeboxoffice.com/>

[Check out what's playing in Wyckham House >>](#)





## Drum away your stress!

Drum away at end-of-semester stress and get in touch with your fellow students!

If you're feeling stressed out as the semester comes to an end, the Cultural Mosaic Centre (CMC) recommends you come out and drum away that stress at a drum circle in Wyckham House on April 6th at 12:30!

Facilitated by Barb Oxland, the drum circle is an energetic and uplifting experience that can engage participants in a multicultural experience out of their ordinary comfort zones. Drum circles can be incredible stress relievers, and bring diverse people together in harmony.

Students, staff, and faculty are welcome at the drum circle. No experience is necessary, and all of the drums will be supplied – just come out and join in!



Drum circle  
April 6  
Wyckham House  
12:30

[Visit the CMC >>](#)

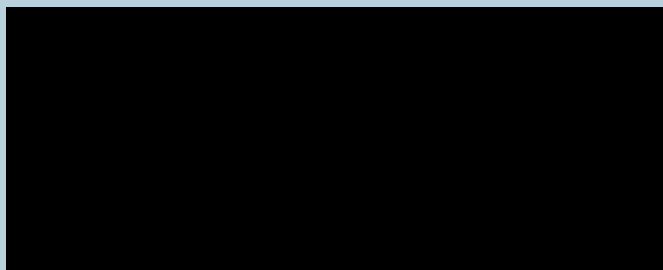
## One last chance to party!

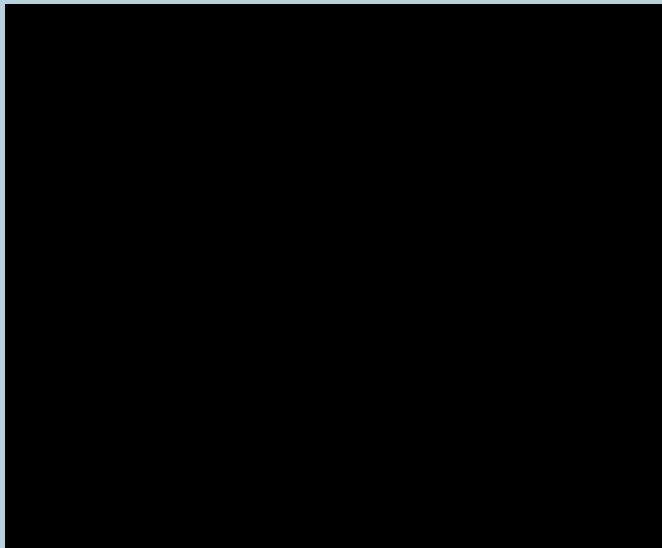
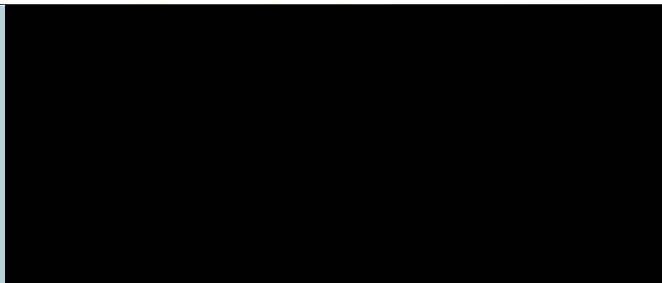


SAMRU wants to give you one last chance to party before you get down to business with this semester's exams.

Come on out to the Last Class Bash on Wednesday, April 13th! This concert features the awesome mashup artistry of The White Panda from Chicago, and our headliner is none other than Calgary's own MBF - Michael Bernard Fitzgerald. Doors open to Wyckham House at 8pm and you can get your tickets in advance from the Liberty Lounge for only \$10 each. If you want to buy online, tickets are on sale at <http://www.primeboxoffice.com> for \$20 each.

[Check out what's playing in Wyckham House >>](#)





### Who won the E-Awards?

If you applied for an E-Award or nominated your club, a staff or faculty member for an award, make sure to check out the list of winners on the SAMRU website soon! Winner names will be posted shortly after the March 31st show! If you didn't apply this year, bookmark the E-Award page, and be sure to apply next year, or thank that teacher or staff member who made your MRU experience better by nominating him or her!



[Check out the winners! >>](#)

### Will you be graduating?



If this is your final semester at MRU – congratulations! Even though you'll be moving on, you know that you'll still want to come back for some of the awesome shows that happen here on campus and more! So, stay in touch with the SAMRU! Either join our Facebook Fan page or send a quick email and ask to be put on our alumni mailing list! Also, although right now you're getting this info from email (which won't continue after you graduate), you can always check back to see What's Happening!

[Stay in touch via Facebook >>](#)

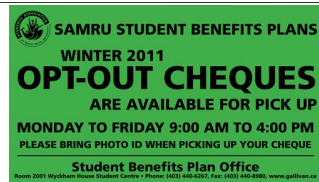
[Join our Alumni mailing list >>](#)

[Bookmark What's Happening! >>](#)

### Did you opt-out? Don't forget to pick up your cheque!

The Students' Association, through Gallivan & Associates Student Networks, provides you with a comprehensive set of extended health and dental insurance benefits. If you opted-out for the winter 2011 semester,

don't forget to pick up your cheque in the basement of Wyckham House before you head off for the summer!



[Check out the Student Health & Dental office >>](#)

## Getting experience and getting the (summer) job



Will you be hitting the pavement with other students and recent grads looking to work this summer? Start looking early for summer employment to beat the rush – you know, the thousands of other post-secondary students who ALSO finish exams at the end of April.

Next, take what you can get. Maybe your dream job isn't hiring, but sitting around watching True Blood on your iPad isn't going to buy books next semester. While it might be depressing to go back to your high school job when you're in University, it beats being broke.

If your part-time job doesn't have the hours to hire you full-time during the summer take advantage of your student status. Did you know that there's federal money out there for companies to hire students and new graduates? The Canada Summer Job 2011 program for instance was designed for students who are returning to school in the fall. Your student status is an advantage to a small business or not-for-profit organization that qualifies.

If meaningful, relevant work means more to you than the money, consider volunteering. If you have a job with only part-time hours, consider doing some volunteer work that is relevant to your field. Many not-for-profit organizations have a multitude of volunteer opportunities, so check out what is available and where you can make a difference while also gaining valuable experience. If you're interested in the arts – check out arts groups or summer festival organizations. If you're interested in travelling green while you volunteer, take a look at Willing Workers on Organic Farms or similar programs.

Lastly, if you're feeling depressed about that elusive summer job, consider creating your own employment. All of those skills you have might be able to be translated into something you can work hard at this summer, and then even continue on doing part-time when school starts back up again in the fall.

## Used book consignment

Don't know what to do with all of your textbooks once exams are over? Bring them down to CopyWrite in the basement of Wyckham House – and consign your books! What is used book consignment? Simply put, you set the price, CopyWrite sells your books and you get back 75% of the sale price. What does this mean for you? More money! Since you set the price, you have the opportunity to make some major cash once your books sell, and with our new system, getting money back is faster than it ever was before. If you have already put your books on consignment, don't forget to check back with the CopyWrite before the break in case you have a cheque waiting!

[Come on in, or consign online >>](#)



## Check out the SAMMIES

MRU students created videos all about the SAMRU and what we do for students at MRU. These videos were part of a video contest called the SAMMIES! At the time of writing, we don't know who will win, but the



winners will be [announced on our contest page!](#) Check out the link, and if you want to get a chance at some awesome prize money next year, start thinking about how YOU would feature your Students' Association – the contest will take place again in the 2011-2012 academic year!

[Check out the winners >>](#)

## Join the conversation



Want to be in-the-know? Want to be the first one to hear about upcoming concerts, give-aways, prizes, and freebies? Want to know about all the cool stuff your SAMRU is doing to make your life better while here at MRU?

Join us on Facebook to get event invites, concert updates, and other information that matters.

"Like" the SAMRU on Facebook for even more information, or if you only want info in 140 characters or less, follow us on Twitter! Do you want to get a bit more visual? The SAMRU also has a YouTube channel!



[Be a friend >>](#)



[Like the SAMRU? >>](#)



[Tweet away! >>](#)



[Subscribe to our channel >>](#)

## SAMRU Event Highlights

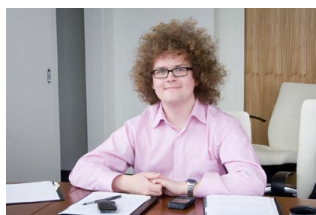
<p>Every Monday Monday Night Karaoke <a href="#">Liberty Lounge</a></p>	<p>April 6 <a href="#">Drum circle</a> Wyckham House 12:30</p>
<p>Every Tuesday Spanish Speaking Circle <a href="#">Cultural Mosaic Centre, 3rd floor Wyckham House</a> 2pm</p>	<p>April 7 <a href="#">Homosexuality &amp; the Bible: A critique of traditional use of scripture</a> Council Chambers 12-2pm</p>
<p>Every Wednesday <a href="#">AccessAbility ASL</a> 12-1pm</p>	<p>April 7 Let's talk sex with Murry the Penguin <a href="#">Pride Centre</a> 11-3:30pm</p>
<p>Every Friday CMC Tea Party <a href="#">Cultural Mosaic Centre, 3rd floor of Wyckham House</a> 11-2pm</p>	<p>April 7 Fefe Dobson and These Kids Wear Crowns <a href="#">Liberty Lounge</a> 8pm</p>
<p>April 1 Human Trafficking presentation <a href="#">Soc Society (Clubs)</a> EB 1102</p>	<p>April 12 <a href="#">Arts &amp; Crafts Market</a> Wyckham House Food Court 10-2pm</p>
<p>April 1 <a href="#">April Fools Day "PSYCH!" Party</a> Liberty Lounge 8pm-2am</p>	<p>April 13 Good Food Box pick up <a href="#">Sustainability Centre</a></p>

<p>April 1-29 Book Drive <a href="#">Student's Sustainability Club</a></p> <p>April 2 Rock Paper Scissor Death Match <a href="#">SIFE Mount Royal (Clubs)</a></p> <p>April 4 Good Food Box orders due today <a href="#">Sustainability Centre</a></p> <p>April 5 <a href="#">Wizard's Chess</a> Wyckham House</p>	<p>April 13 Last Class Bash <a href="#">Wyckham House</a> 8pm</p> <p>April 14 <a href="#">SAMRU Residence Grocery Shuttle</a></p> <p>April 19 <a href="#">Club Annual Reports Due</a></p> <p>April 22 <a href="#">Earth Day</a></p>
---	---

For the latest updates on what's happening with your Students' Association, check out our [event calendar!](#)

SHARE   

## SAMRU in the news



*SAMRU President Robert Jones*

[SAMRU President Robert Jones](#) was profiled as elections grew nearer. Robert did not run for a second term as president, so the spot was open for a new candidate.

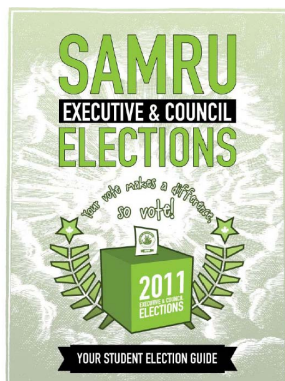


*SAMRU VP External Meghan Melnyk*

Sodexo-run franchises unable to accept gift cards complain students, and SAMRU's [VP External Meghan Melnyk](#) along with Commissioner to the VP External, Nick Smith respond.

What do you think about a lack of competition (price points, options) when it comes to your food choices at MRU? [VP External Meghan Melnyk](#) has a few thoughts for the Reflector.

Even more comments about Sodexo and food services on campus from [VP External Meghan Melnyk](#).



*Lots of election news!*

Along with election news, the Reflector followed up with our four [SAMRU Executives](#) to find out what they have planned when their terms are over.

The [SAMRU elections](#) were profiled – with questions as to how many students will get out and vote.

The elections are over now, but the Reflector ran a story on Feb 3 about the students [running to represent you](#) on Student's Council. With more election news, the Reflector also interviewed the contested seat for [Science & Technology rep](#), and a [former executive member](#) comments on his experience running for office.

Did you vote in the recent SAMRU election? Did you think you were well informed before you voted? The Reflector ran an editorial [criticizing](#)

[SAMRU's election timing and process – what do you think?](#)



Current [Science and Technology Students' Council](#) representative Shiv interviewed about security matter in the Reflector.

With students putting [a lot of money](#) into the Students Association, involvement and awareness about the upcoming elections is important, in this article from One Stop Newstand.

The Reflector introduces you to the [newly elected SAMRU Executive Committee](#), who will take their roles in the spring.

Looking for info about one of the services in [Wyckham House – Bright Dental](#) got some great reviews on this service review site.

*John (Shiv) McFarlane,  
Science and Technology  
Representative*

## Archive

For past issues of What's Happening, please check out the PDFs

[March 2010](#)

[April 2010](#)

[May/June 2010](#)

[July/August 2010](#)

[September 2010](#)

[October 2010](#)

[November 2010](#)

[December 2010](#)

[January 2011](#)

[February 2011](#)

For further information, please contact Dawn Linnemoller, [Editor & Content Coordinator](#)

©2011 Students' Association of Mount Royal University: 4825 Mount Royal Gate SW, Calgary AB T3E 6K6, Canada